

Reagents for Stem Cell Research

ELISAs

More color choices for Flow
Cytometry/Imaging/Sorting

Recombinant Proteins

Antibodies for Western Blot



biolegend.com

The Path to Legendary Discovery™



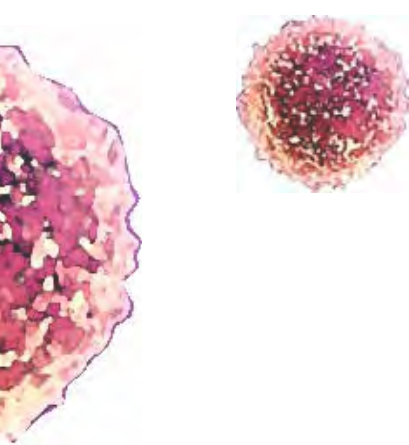
Table of Contents

Introduction	3
Product Lines	3
Product Highlights	4
Stem Cell Product Listing	5
Mouse Immunology Antibodies.....	5
Mouse Cytokine Antibodies	7
Mouse ELISAs	7
Mouse Recombinant Proteins	7
Rat Immunology Antibodies.....	8
Rat Recombinant Proteins	8
Cell Biology Antibodies	8
Human Immunology Antibodies.....	9
Human Cytokine Antibodies.....	11
Human ELISAs	11
Human Recombinant Proteins	11
Contact Information	12

Abbreviations:

- LEAF™ = Low Endotoxin, Azide-Free
- A488 = Alexa Fluor® 488
- A647 = Alexa Fluor® 647
- A700 = Alexa Fluor® 700
- PB = Pacific Blue™

- FC = Flow Cytometry
- ICFC = Intracellular Flow Cytometry
- IHC = Immunohistochemistry
- IF = Immunofluorescence
- IP = Immunoprecipitation
- WB = Western Blot
- FA = Functional Assay
- Neutr = Neutralization
- Block = Blocking
- BA = Bioassay
- Inhib = Inhibition



Introduction

Stem cell biology has emerged as one of the most significant fields in contemporary science. The ability to characterize and isolate stem cell populations and monitor the dynamic changes that occur in both intracellular and surface proteins during differentiation is essential to our understanding of the underlying developmental pathways. New progress in the ability to induce pluripotent stem cells has created further possibilities for translational medicine based on stem cell research.

BioLegend offers a variety of reagents for flow cytometry, cell sorting, imaging, western blot, and functional assays. Our broad product lines are composed of many important antibody clones developed by researchers throughout the world and also clones developed by BioLegend in San Diego, California. You can be confident of each product, as each data sheet comes with quality-control validation data and a 100% satisfaction guarantee. Our world-class chemists specialize in directly conjugated antibodies optimized for flow cytometry, producing the highest quality products available on the market. We also provide affordable, high-quality ELISAs with comparable specifications to the leading competitors with our ELISA MAX™ and LEGEND MAX™ (with pre-coated plates) product lines. Our recombinant proteins are quality-tested by functional assay with each lot. Specially discounted pricing is available for all bulk orders. *Contact us today!*

Product Lines

Mouse Immunology - Mouse-reactive purified unconjugated and conjugated antibodies for flow cytometry and other applications.

Rat Immunology - Rat-reactive purified unconjugated and conjugated antibodies for flow cytometry and other applications.

Human Immunology - Human-reactive purified unconjugated and conjugated antibodies for flow cytometry and other applications.

LEAF™ - Low endotoxin, azide-free purified antibodies for use in functional assays *in vivo* and *in vitro*.

Cell Biology - Monoclonal and polyclonal purified antibodies against intracellular proteins for western blot and other applications.

Cytokine/Chemokine - Antibodies for detection of intracellular cytokines and chemokines by flow cytometry, ELISA, or ELISPOT.

LEGEND MAX™ - Complete ELISA kits with pre-coated plates for maximum convenience.

ELISA MAX™ - Affordable ELISA sets for the experienced ELISA user.

Recombinant Proteins - Recombinant proteins quality-tested by bioassay.

Product Highlights

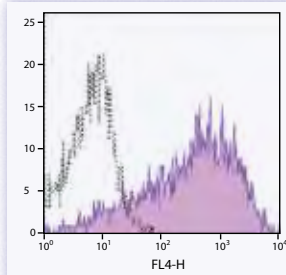
Human SSEA-1

Other Names: Stage-Specific Embryonic Antigen, X-hapten, Lewis X, 3-FAL, CD15

Stage-Specific Embryonic Antigen-1 (SSEA-1) is a Lewis blood group related carbohydrate antigen known as X-hapten, Lewis X, 3-FAL, 3-fucosyl-N-acetylglucosamine, or CD15. The expression pattern of SSEA-1 antigen is different from human and mouse. In mouse, SSEA-1 is expressed on embryonic stem cells (ES), embryonal carcinoma cells (EC), 8-cell to blastocyst embryos, and a subset of the embryonic inner cell mass. The expression on murine ES cells is decreased upon differentiation. In human, however, SSEA-1 is not found on undifferentiated ES cells, but its expression is upregulated along with differentiation. SSEA-1 is highly expressed on adult human granulocytes. It has been reported that SSEA-1 plays a role in cell adhesion and regulation of cell differentiation.

Clone: MC-480 **Isotype:** Mouse IgM, κ

Immunogen: F9 teratocarcinoma stem cells (X-irradiated)



F9 (mouse embryonic carcinoma cell line) stained with SSEA-1 (Clone MC-480) Alexa Fluor® 647

Reactivity: Human, Mouse, Rat

Applications:

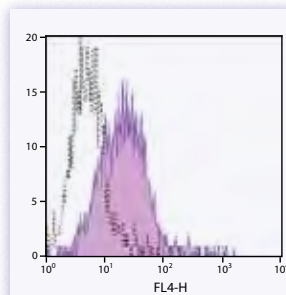
FC—Quality tested
IHC², IP, IF¹—Reported in the literature

The MC-480 antibody reacts with human, mouse, and rat Stage-Specific Embryonic Antigen-1 (SSEA-1).

Application References: 1. Shablott M., *et al.*, 1998. *Proc Natl Acad Sci U S A* 95: 13726. ♦ 2. Bosman, E.A., *et al.*, 2006. *Development* 133: 3399.

Human Neural Progenitor Cells (NPC)

Neural progenitor cells are a population of cells with self-renewal and multipotency for differentiation into astrocytes, neurons, and oligodendrocytes. The NPCs have large therapeutic value for diseases of the nervous system.



Human retinoblastoma cell line, Weri-RB-1, stained with NPC (Clone 57D2) PE

Clone: 57D2

Isotype: Mouse IgG₁

Immunogen: UT-7 (erythroleukemia cell)

Applications:

FC—Quality tested

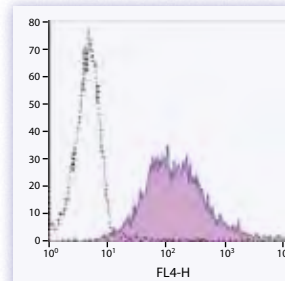
The 57D2 antibody reacts with an antigen that is selectively expressed on human neural progenitor cells (NPCs).

Application References: 1. Vogel, W., *et al.*, 2003. *Haematologica* 2003;88: 126.

Human STRO-1

STRO-1 is a cell surface antigen recognized by mAb STRO-1. It is expressed by bone marrow mesenchymal stromal cells and nucleated erythroid precursors, but not by committed hematopoietic progenitors. In combination with glycoprotein A (GPA), STRO-1 is a useful marker for identification of mesenchymal stem cells. It has been reported that STRO-1⁺/GPA⁻ bone marrow cell subset can be used as a universal stromal feeder layer for hematopoietic stem/progenitor cells. This subset of cells has multipotential ability to differentiate into fibroblasts, adipocytes, osteoblasts, chondrocytes, and vascular smooth muscle-like cells.

Clone: STRO-1 **Isotype:** Mouse IgM, λ



MG-63 (human osteosarcoma cell line) stained with STRO-1 (Clone STRO-1) Alexa Fluor® 647

Immunogen: Human CD34⁺ bone marrow cells

Applications:

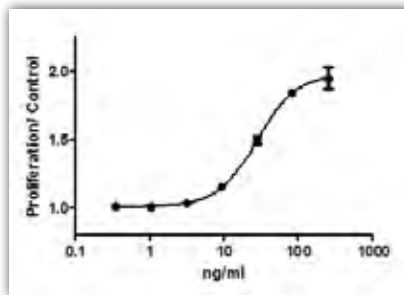
FC—Quality tested

Application References: 1. Simmons, P.J. and B. Torok-Storb., 1991. *Blood*. 78: 55.

Recombinant Mouse SCF

Applications: Bioassay

SCF (KITL) is a hematopoietic growth factor, that can synergize with a number of other cytokines to stimulate growth of hemopoietic progenitors *in vitro* and stimulates blood cell production *in vivo*. SCF is encoded by Sl ("steel"), a gene critical to the development of several distinct cell lineages during embryonic life.



TF-1 cell proliferation induced by mouse SCF

Mouse SCF, amino acids Lys26-Ala189 (Accession# M59915) was expressed in *E. coli*.

Bioactive Protein: This SCF protein is biologically active with an ED₅₀ = 15 ng/ml, corresponding to a specific activity of 6.7 x 10⁴ units/mg, as determined by the dose dependent stimulation of TF-1 cell proliferation. Less than 0.01 ng of endotoxin per μ g cytokine as determined by the LAL method.

Stem Cell Product Listing

Mouse Immunology Antibodies

Specificity	Clone	Formats	Applications	Specificity	Clone	Formats	Applications
CD2	RM2-5	Biotin, FITC, PE, LEAF™	FC, IP, FA	CD38	90	Purified, Biotin, FITC, PE, PE/Cy5, APC, A488, A647, PE/Cy7	FC, IHC/IF
CD3	17A2	Purified, FITC, PE, LEAF™, A647, A488, PB, A700, PE/Cy7, APC/Cy7	FC, IHC, IP, FA	CD40	1C10	Purified, Biotin, PE, LEAF™	FC, IP, FA
CD3ε	145-2C11	Purified, Biotin, FITC, PE, PE/Cy5, APC, LEAF™, PE/Cy7, A488, A647, PerCP, PerCP/Cy5.5, APC/Cy7	FC, IHC, IP, WB, FA	CD44	IM7	Purified, Biotin, FITC, PE, PE/Cy5, APC, LEAF™, A488, A647, A700, PB, APC/Cy7, PE/Cy7	FC, IHC, IP, FA
CD4	GK1.5	Purified, Biotin, FITC, PE, PE/Cy5, APC, APC/Cy7, LEAF™, APC/Cy5.5, PE/Cy7, A488, A647, PB, A700, PerCP, PerCP/Cy5.5	FC, IHC, IP, FA	CD45	30-F11	Purified, Biotin, FITC, PE, PE/Cy5, APC, PE/Cy7, APC/Cy7, LEAF™, A488, A647, A700, PB, PerCP, PerCP/Cy5.5	FC, IHC, IP
	RM4-4	Purified, FITC, PE	FC	CD45.1	A20	Purified, FITC, PE, Biotin, APC/Cy5.5, APC, APC/Cy7, A488, A647, PB, A700, PerCP, PerCP/Cy5.5, PE/Cy7	FC, IHC, IP
	RM4-5	Purified, Biotin, FITC, PE, PE/Cy5, APC, LEAF™, APC/Cy5.5, APC/Cy7, PE/Cy7, A488, A647, PB, A700, PerCP, PerCP/Cy5.5	FC, IHC, FA	CD45.2	104	Purified, FITC, PE, Biotin, APC, APC/Cy5.5, A488, A647, PB, A700, APC/Cy7, PerCP, PerCP/Cy5.5	FC
	H129.19	Purified, PE, PE/Cy5, FITC, LEAF™	FC, IHC	CD45R/B220	RA3-6B2	Purified, Biotin, FITC, PE, PE/Cy5, APC, LEAF™, PE/Cy7, APC/Cy7, A488, A647, A700, PB, PerCP, PerCP/Cy5.5	FC, IHC, IP, FA
CD4/CD25	RM4-5/PC61	PE	FC	CD45RB	C363-16A	Purified, FITC, PE, APC/Cy7, A647, PerCP/Cy5.5	FC, IHC, IP
CD8a	53-6.7	Purified, Biotin, FITC, PE, PE/Cy5, APC, APC/Cy7, LEAF™, APC/Cy5.5, PE/Cy7, PB, A488, A647, A700, PerCP, PerCP/Cy5.5	FC, IHC, IP, FA	CD47	miap301	Purified, Biotin, PE, A647	FC
	5H10-1	Purified, FITC	FC, IHC	CD48	HM48-1	Purified, FITC, PE, LEAF™, Biotin, APC, A488, A647, PB, PE/Cy5, PE/Cy7	FC, IP, FA
CD8b	YTS156.7.7	Purified, PE, FITC, Biotin, A647, PerCP/Cy5.5	FC	CD49b	HMA2	Purified, FITC, PE, LEAF™, A488, A647	FC, IHC, IP, FA
CD9	MZ3	Purified, Biotin, PE	FC	CD49b (pan-NK cells)	DX5	Purified, FITC, PE, Biotin, A488, A647, PerCP/Cy5.5	FC
CD11a	2D7	Purified, FITC, PE	FC, IHC	CD49d	R1-2	Purified, FITC, PE, LEAF™, A488, A647	FC, IHC, IP, FA
	M17/4	Purified, Biotin, FITC, PE, LEAF™, A488, A647	FC, IHC, IP, FA		9C10(MFR4.B)	Purified, FITC, PE, LEAF™	FC, IHC, FA
CD11b	M1/70	Purified, Biotin, FITC, PE, PE/Cy5, APC, LEAF™, PE/Cy7, A488, A647, A700, PB, APC/Cy7, PerCP, PerCP/Cy5.5	FC, IHC, IP, FA	CD49e	5H10-27(MFR5)	Purified, FITC, PE, LEAF™, A488, A647	FC, IHC, FA
CD11c	N418	Purified, FITC, PE, APC, Biotin, A488, A647, PB, PE/Cy5, PE/Cy7, APC/Cy7, PerCP, PerCP/Cy5.5	FC, IHC, IP		HMα5-1	Purified, Biotin, PE, LEAF™	FC, IP, FA
CD14	Sa14-2	Purified, PE, FITC, Biotin, LEAF™, APC, PerCP/Cy5.5	FC, IP, FA	CD51	RMV-7	Purified, Biotin, PE, LEAF™	FC, IP, FA
CD16/32	93	LEAF™	FC, IP, FA	CD54	YN1/1.7.4	Purified, FITC, PE, Biotin, LEAF™, PB, A488, A647, A700	FC, IHC, IP, WB, FA
CD18	M18/2	Purified, FITC, PE, LEAF™, A488, A647	FC, IHC, IP, WB, FA	CD55	RIKO-3	Purified, PE, A647	FC, IHC
CD19	MB19-1	Purified, Biotin, FITC	FC, IP	CD62L	MEL-14	Purified, Biotin, FITC, PE, PE/Cy5, APC, LEAF™, PE/Cy7, A488, A647, PB, A700, PerCP, PerCP/Cy5.5	FC, IHC, IP, FA
	6D5	Purified, FITC, PE, Biotin, APC, PE/Cy5, LEAF™, APC/Cy5.5, PE/Cy7, A488, A647, A700, PB, APC/Cy7, PerCP, PerCP/Cy5.5	FC, IP, WB, FA	CD70	FR70	Purified, Biotin, PE, LEAF™	FC, IHC, IP, FA
CD21/CD35 (CR2/CR1)	7E9	Purified, PE, FITC, Biotin, LEAF™, APC, PerCP/Cy5.5, PB, APC/Cy7, PE/Cy7	FC, WB, FA	CD71	RI7217	Purified, FITC, PE, Biotin, LEAF™, PE/Cy7	FC, FA
CD24	M1/69	Purified, FITC, PE, LEAF™, PE/Cy5, APC, A488, A647, PB, PE/Cy7	FC, IHC, WB, FA	CD81	Eat-2	Purified, Biotin, PE, LEAF™	FC, IP, WB, FA
	30-F1	Purified	FC	CD88	20/70	Purified, PE, LEAF™	FC
CD25	PC61	Purified, Biotin, FITC, PE, PE/Cy5, APC, LEAF™, PE/Cy7, A488, A647, PB, A700, APC/Cy7, PerCP, PerCP/Cy5.5	FC, IHC, IP, FA	CD90	G7	Purified, LEAF™	FC, IHC, FA
CD27	LG.3A10	Purified, PE, FITC, Biotin, APC, PerCP/Cy5, LEAF™	FC, IP, IHC, FA	CD90.2	30-H12	Purified, Biotin, FITC, PE, PE/Cy5, APC, LEAF™, A488, A647, PB, A700, PE/Cy7	FC, IHC, FA
CD28	E18	Purified, PE, Biotin, LEAF™, PE/Cy5, PE/Cy7, A488, A647, APC	FC, FA	CD101 (IGSF2)	RM101	A647	FC
CD29	HMB1-1	Purified, FITC, PE, LEAF™, Biotin, A488, A647, A700, APC, PE/Cy5, PE/Cy7, PB, APC/Cy7	FC, IHC, IP, FA	CD105	MJ7/18	Purified, PE, Biotin, A488, PE/Cy7, PB	FC, IHC, IP, WB
CD30	mCD30.1	Purified, Biotin, PE	FC	CD117 (c-kit)	2B8	Purified, Biotin, FITC, PE, PE/Cy5, APC, PE/Cy7, A488, A647, PB, PerCP, PerCP/Cy5.5, PE/Cy7	FC, IHC, IP
CD31	390	Purified, Biotin, FITC, PE, LEAF™, APC, A488, A647, PE/Cy7	FC, IHC, IP, FA		ACK2	Purified, PE, APC, LEAF™	FC, Block, Depl
	MEC13.3	Purified, Biotin, FITC, PE, LEAF™, APC, A488, A647	FC, IHC, IP, FA	CD122	FC, IP, FA	Purified, PE, FITC, Biotin, LEAF™	FC, IP, FA
CD34	MEC14.7	Purified, PE, Biotin, APC, PE/Cy5, A647	FC, IHC, IP, WB	CD123	5B11	Purified, Biotin, PE	FC
	HM34	Purified, Biotin, PE, A647, PerCP/Cy5.5	FC	CD127 (IL-7Ra)	SB/199	Purified, FITC, PE, Biotin, A647, A488, APC, PerCP/Cy5.5	FC
CD36	HM36	Purified, Biotin, A488, A647, APC, PB	FC	CD135	A2F10	Purified, PE, APC, LEAF™, Biotin, PE/Cy5	FC, FA
				CD140a	APA5	Purified, PE, LEAF™	FC, WB, IHC, Block
					APB5	Purified, PE, LEAF™	FC, WB, IHC, Block
				CD147	OX-114	Purified, PE, FITC, Biotin	FC, WB, IHC

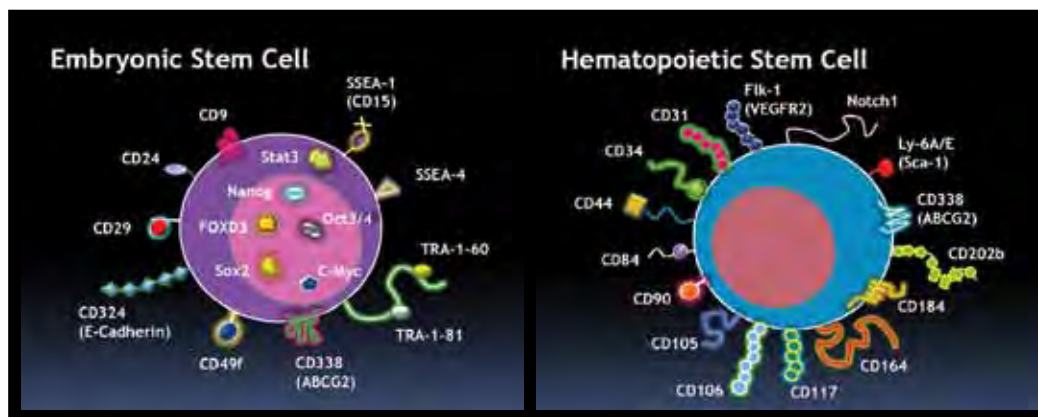


Reagents for Stem Cell Research

Specificity	Clone	Formats	Applications
CD150 (SLAM)	TC15-12F12.2	Purified, PE, Biotin, APC, PE/Cy5, LEAF™, PE/Cy7, A488, A647, PB, PerCP/Cy5.5	FC, IP, FA
CD155 (PVR)	TX56	Purified, PE	FC
CD182 (CXCR2)	TG11/CXCR2	A647, PerCP/Cy5.5	FC
CD183 (CXCR3)	CXCR3-173	Purified, Biotin, PE, APC, PE/Cy7, PerCP/Cy5.5, LEAF™	FC, FA
CD184 (CXCR4)	TG12/CXCR4	A647	FC
CD195 (CCR5)	HM-CCR5	Purified, Biotin, PE, LEAF™, APC, A488, A647	FC
CD200 R (OX2R)	OX-110	Purified, PE, FITC	FC
CD202b (Tie-2, CD202)	TEK4	Purified, PE, Biotin, LEAF™	FC, IF
CD226 (DNAM-1)	10E5	Purified, PE, FITC, A647	FC, IP
CD282 (TLR2)	T2.5	Purified, FITC, Biotin, A488, A647	FC, IHC, IP
CD309 (VEGFR2)	89B3A5	Purified, PE, Biotin, A488, A647, PB, PerCP, PerCP/Cy5.5	FC
Delta-like 1 (DLL1)	HMD1-3	Purified, Biotin, PE, A647, APC, LEAF™	FC, IHC, FA
Delta-like 4 (DLL4)	HMD4-1	Purified, PE, APC, LEAF™	FC, IHC, FA
ESAM	1G8/ESAM	Purified, PE	FC
H-2Db	KH95	Purified, FITC, PE, Biotin, A647	FC
H-2Dd	34-2-12	Purified, FITC, PE, Biotin, A647	FC, IHC, IP
H-2Dk	15-5-5	Purified, PE	FC
H-2Kb	AF6-88.5	Purified, FITC, PE, Biotin, A488, A647, PerCP/Cy5.5, PB	FC, IHC, IP
H-2Kb/H-2Db	28-8-6	Purified, PE, Biotin, FITC, A647	FC, IHC
H-2Kb/H-2Dd	34-1-2S	Purified, PE, Biotin, FITC, A647, A488	FC, IHC, IP
H-2Kd	SF1-1.1	Purified, FITC, PE, Biotin, A488, A647, PB	FC, IHC, IP, WB
H-2Kk	36-7-5	Purified, PE, Biotin, FITC, A647	FC, IHC
	AF3-12.1	Purified, FITC	FC
H-2Kq	KH114	Purified, FITC, A647	FC
H-2Ld/H-2Db	28-14-8	Purified, PE, Biotin	FC, IHC, IP
I-A/I-E	M5/114.15.2	Purified, FITC, PE, LEAF™, Biotin, PE/Cy5, APC, A488, A647, A700, PB, APC/Cy7, PerCP, PerCP/Cy5.5	FC, ICFC, IHC, IP, FA
I-Ab	25-9-17	Purified, Biotin, FITC, A488, A647	FC, IHC, IP
	KH74	Purified, Biotin, FITC, A647, A488	FC, IHC

Specificity	Clone	Formats	Applications
	AF6-120.1	Purified, FITC, PE, Biotin, A488, A647, PerCP/Cy5.5	FC, IF, IHC, IP
I-Ad	39-10-8	Purified, Biotin, FITC, A647, A488	FC, IF, IHC
I-Ak (Aak)	11-5.2	Purified, FITC, Biotin, A488	FC, IHC, IP
	10-3.6	Purified, FITC, PE, Biotin, A488, A647	FC, IHC, IP
I-Aq	KH116	Biotin, A647, A488	FC
I-Ek/RT1D	14-4-4S	Purified, FITC, Biotin, A488, A647	FC, IHC, IP
Jagged 2	HMJ2-1	Purified, PE, A647, LEAF™	FC, IHC
LTbR	5G11	Purified, PE, LEAF™	FC, ELISA
Ly-6A/E (Sca-1)	D7	Purified, FITC, PE, Biotin, PE/Cy5, APC, PE/Cy7, A488, A647, PB, PerCP, PerCP/Cy5.5	FC, IHC, IP, WB
	E13-161.7	Purified, FITC, PE, Biotin, PE/Cy5, PE/Cy7, APC, A488, A647, PB, PerCP, PerCP/Cy5	FC, IHC, IP, IF
Ly-6C	HK1.4	Purified, PE, FITC, Biotin, APC, PB, A647, PE/Cy7, PerCP/Cy5.5, LEAF™	FC
Ly-6G	1A8	Purified, PE, FITC, Biotin, APC, PB, A647, PE/Cy7, PerCP/Cy5.5, LEAF™	FC
Ly-6G/Ly-6C (Gr-1)	RB6-8C5	Purified, FITC, PE, Biotin, PE/Cy5, APC, LEAF™, PE/Cy7, A488, A647, PB, A700, APC/Cy7, PerCP, PerCP/Cy5.5	FC, IHC, IP, WB, FA
Mac-3	M3/84	Purified, FITC, PE, Biotin, A488, A647	FC, IHC, IP
Notch 1	HMN1-12	Purified, PE, A647, LEAF™	FC, IHC, FA
Notch 2	HMN2-35	Purified, PE, APC, LEAF™	FC, IHC, FA
Notch 3	HMN3-133	Purified, PE, A647, LEAF™	FC, IHC, FA
Notch 4	HMN4-14	Purified, PE, APC, LEAF™, A647	FC, IHC, FA
Panendothelial cell antigen	MECA-32	Purified, Biotin, A488	FC, ICC, IHC, IP, WB
Podoplanin	8.1.1	Purified, Biotin, PE, A488	FC, IHC
SSEA-1	MC-480	Purified, Biotin, PE, A488, A647	FC, IHC, IP, IF
TCR-β chain	H57-597	Purified, FITC, PE, Biotin, PE/Cy5, APC, LEAF™, APC/Cy7, PE/Cy7, A488, A647, A700, PB	FC, IHC, IP, FA
TER-119/Erythroid Cells	TER-119	Purified, FITC, PE, Biotin, LEAF™, PE/Cy5, APC, A488, A647, A700, PE/Cy7, APC/Cy7, PerCP/Cy5.5, PerCp	FC, IHC, IP, WB
Tim-1	RMT1-4	Purified, PE, Biotin	FC
Tim-2	F37-2C4	Purified, Biotin, PE, A647	FC, IF, ELISA
TMTSP (THSD1)	TX17.10	Purified, PE, Biotin, APC, A647	FC, IP, WB, ICC
Toll-like Receptor 4 (TLR4, CD284)/MD2 Complex	MTS510	Purified, PE, Biotin, LEAF™	FC, ICFC, IP, FA

See more mouse antibodies at biologend.com



Mouse Cytokine Antibodies

Specificity	Clone	Formats	Applications	Specificity	Clone	Formats	Applications
IL-1 α	ALF-161	Purified, LEAF™, PE	ELISA/ELISPOT capture, ICFC, IP, Neutr., WB	IL-21	5H3-O12-L23	Purified, Biotin	WB
IL-1 β	B122	Purified, LEAF™, Biotin	ELISA/ELISPOT capture, ICFC, IP, IHC, Neutr., WB	IL-22	Poly5164	Purified, A647	ICFC
IL-2	JES6-5H4	Purified, LEAF™, Biotin, FITC, A488, A647, A700, APC, PE, PB, PercP/Cy5.5	ELISA/ELISPOT detection, ICFC, IHC, Neutr.	IL-23 (p19)	MMp19B2	Purified	ELISA Capture
IL-4	11B11	Purified, LEAF™, APC, PE, A488, A647	ELISA/ELISPOT capture, ICFC, IHC, IP, Neutr.	GM-CSF	MP1-22E9	Purified, LEAF™, PE, FITC	ELISA/ELISPOT detection, ICFC, IHC, Neutr.
IL-5	TRFK5	Purified, LEAF™, PE, APC	ELISA/ELISPOT capture, ICFC, IHC, WB, Neutr.	MCP-1	2H5	Purified, LEAF™, Biotin, PE	ELISA/ELISPOT capture/detection, ICFC, IHC, WB, Neutralization
IL-9	RM9A4	Purified, PE, APC, A647	ICFC	NGF	JKmNGF-1	Purified	ELISA Capture
IL-10	JES5-16E3	Purified, LEAF™, Biotin, FITC, A488, A647, APC, PE, PB	ELISA/ELISPOT capture/detection, ICFC, IHC, Neutr.	TRANCE	IK22/5	Purified, LEAF™, Biotin, PE	Blocking, FC, IP, WB
IL-12 (p70)	C18.2	Purified	ELISA Capture	VEGF-A	2G11-2A05	LEAF™	Neutralization, ELISA, WB, IHC
IL-17	TC11-18H10.1	Purified, LEAF™, FITC, A488, A647, A700, APC, PE, PB, PercP/Cy5.5, PE/Cy7	ELISA/ELISPOT capture, ICFC, Neutr.				

See more mouse cytokine antibodies at biolegend.com

Mouse ELISAs

LEGEND MAX™ Kits with pre-coated plates

LEGEND MAX™ Mouse IL-2 ELISA Kit

LEGEND MAX™ Mouse IL-6 ELISA Kit

LEGEND MAX™ Mouse IL-12 P70 ELISA Kit

LEGEND MAX™ Mouse GM-CSF ELISA Kit

LEGEND MAX™ Mouse IFN- γ ELISA Kit

LEGEND MAX™ Mouse IL-21 ELISA Kit

LEGEND MAX™ Mouse IL-22 ELISA Kit

ELISA MAX™ Deluxe Sets

Mouse IL-1 β ELISA MAX™ Deluxe

Mouse IL-2 ELISA MAX™ Deluxe

Mouse IL-12 (p70) ELISA MAX™ Deluxe

Mouse IL-17A ELISA MAX™ Deluxe

Mouse GM-CSF ELISA MAX™ Deluxe

Mouse IFN- γ ELISA MAX™ Deluxe

Mouse TNF- α ELISA MAX™ Deluxe

ELISA MAX™ Standard Sets

Mouse IL-1 β ELISA MAX™ Standard

Mouse IL-2 ELISA MAX™ Standard

Mouse IL-17A ELISA MAX™ Standard

Mouse GM-CSF ELISA MAX™ Standard

Mouse IFN- γ ELISA MAX™ Standard

Mouse TNF- α ELISA MAX™ Standard

Mouse IL-4 ELISA MAX™ Standard

See more mouse ELISAs at biolegend.com

Mouse Recombinant Proteins

Recombinant Mouse IL-1 α (carrier-free)	BA, Block	Recombinant Mouse IL-17A	BA, ELISA
Recombinant Mouse IL-1 β (carrier-free)	BA, Block	Recombinant Mouse IL-17A/F Heterodimer (carrier-free)	BA
Recombinant Mouse IL-2 (carrier-free)	BA	Recombinant Mouse IL-17A (ELISA Std.)	ELISA
Recombinant Mouse IL-2 (ELISA Standard)	ELISA	Recombinant Mouse IL-22 (carrier-free)	BA, Block
Recombinant Mouse IL-3	BA, ELISA	Recombinant Mouse IL-25 (IL-17E) (carrier-free)	BA
Recombinant Mouse IL-3 (carrier-free)	BA, Blocking	Recombinant Mouse IL-33 (carrier-free)	BA, Block
Recombinant Mouse IL-4	ELISA, BA, Block	Recombinant Mouse FGF-basic (carrier-free)	BA, Block
Recombinant Mouse IL-4 (ELISA Std.)	ELISA	Recombinant Mouse GM-CSF (ELISA Std.)	ELISA
Recombinant Mouse IL-5	BA, ELISA	Recombinant Mouse IFN- γ (ELISA Std.)	ELISA
Recombinant Mouse IL-6 (ELISA Std.)	ELISA	Recombinant Mouse IFN- γ (carrier-free)	BA, Block
Recombinant Mouse IL-6 (carrier-free)	BA	Recombinant Mouse MCP-1 (CCL2) (carrier-free)	BA
Recombinant Mouse IL-7	BA, ELISA	Recombinant Mouse MCP-1 (ELISA Std.)	ELISA
Recombinant Mouse IL-10 (carrier-free)	BA, Block	Recombinant Mouse SCF (carrier-free)	BA
Recombinant Mouse IL-10 (ELISA Std.)	ELISA	Recombinant Mouse VEGF120 (carrier-free)	BA, Block
Recombinant Mouse IL-12 (p40 Homodimer)	BA, ELISA	Recombinant Mouse TNF- α (ELISA Std.)	ELISA
Recombinant Mouse IL-12/IL-23 (p40) (ELISA Std.)	ELISA	Recombinant Mouse TNF- α (carrier-free)	BA
Recombinant Mouse IL-12 (p70) (carrier-free)	BA	Recombinant Mouse CD254 (TRANCE, RANKL)	BA, ELISA
Recombinant Mouse IL-12 (p70) (ELISA Std.)	ELISA		
Recombinant Mouse IL-13 (carrier-free)	BA, Block		
Recombinant Mouse IL-17A (carrier-free)	BA		

See more mouse recombinant proteins at biolegend.com



Rat Immunology Antibodies

Specificity	Clone	Formats	Applications	Specificity	Clone	Formats	Applications
CD2	OX-34	Purified, FITC, PE	FC, IHC, IP	CD45	OX-1	Purified, FITC, A488, PE, Biotin, A647, PE/Cy7, APC/Cy7	FC, IHC, IP
CD3	1F4	Purified, FITC, A488, A647	FC, IHC	CD45RA	OX-33	Purified, FITC, A488, A647, PE, Biotin	FC, IHC
CD4	W3/25	Purified, Biotin, FITC, A488, A647, APC/Cy7, PE/Cy7	FC, IHC	CD47	OX-101	Purified, FITC, PE, Biotin, A647	FC
CD4 (domain 1)	OX-38	Purified, PE, FITC, Biotin, A647, LEAF™	FC, IHC (Frozen), Blocking, IP	CD48	OX-45	Purified, Biotin, PE	FC
CD4 (domain 2)	OX-35	Purified, PE, FITC, A488, A647, LEAF™	FC, IHC (Frozen), Blocking, IP	CD54	1A29	Purified, Biotin	FC, IHC, IP
CD5	R1-3B3	Purified, FITC	FC, IHC, WB	CD62L	OX-85	Purified, FITC, A488, A647, PE, PerCP	FC
	OX-19	Purified, Biotin, FITC, A647	FC, IHC	CD71	OX-26	Purified, FITC, A647, Biotin	FC, IHC, IP
CD6	OX-52	Purified, FITC, Biotin, A647, LEAF™	FC, IHC, IP, WB	CD90.1	OX-7	Purified, FITC, A488, A647, A700, PE, Biotin, PerCP, PerCP/Cy5.5, APC/Cy7, PE/Cy7	FC, IHC, IP, WB
CD8a	G28	Purified, PE, FITC, APC, A488, LEAF™	FC, IHC, IP, FA	CD106	MR106	Purified, PE	FC, IHC, IP, WB
	OX-8	Purified, PE, FITC, LEAF™, A488, A647, PerCP	FC, IHC, IP, FA, WB	CD152	WKH203	Purified, PE	FC, IP
CD8b	341	Purified, Biotin, FITC, A488, A647, LEAF™	FC, IHC, IP, WB, FA	CD172a (SIRPa)	OX-41	Purified, PE, LEAF™	FC, IHC, IP, WB
CD11a	WT.1	Purified, Biotin	FC, IHC, IP	CD200 R	OX-102	Purified, FITC	FC, IHC, IP, WB
CD11b/c	OX-42	Purified, FITC, A488, A647, PE, Biotin	FC, IHC, IP	Myeloid Lineage	OX-82	Purified, FITC	FC, WB
CD18 LFA-1 (beta chain)	WT.3	Purified	FC, IHC, IP	RT1A	OX-18	Purified, PE, LEAF™, FITC	FC, IHC (F), IP, Blocking
CD25	OX-39	Purified, FITC, A488, PE, Biotin	FC, IHC, IP	RT1D	OX-17	Purified, FITC, PE, Biotin	FC, IHC, IP
CD26	OX-61	Purified, PE, LEAF™	FC, IHC(F), IP, WB	TCR γ/δ	V65	Purified, FITC, PE	FC, IHC, IP
CD43	W3/13	Purified, FITC, A488, A647, Biotin	FC, IHC, IF				
CD44H (Pgp-1, H-CAM)	OX-49	Purified, FITC, A647	FC, IHC, IP				

See more rat antibodies at biolegend.com

Rat Recombinant Proteins

Recombinant Rat IFN- γ	BA, ELISA	Recombinant Rat IL-6 (carrier-free)	BA, Block
Recombinant Rat IL-2	BA, ELISA	Recombinant Rat IL-2 (carrier-free)	BA, Block
Recombinant Rat IL-4	BA, ELISA	Recombinant Rat TNF- α (carrier-free)	BA, Block

Cell Biology Antibodies

Specificity	Clone	Formats	Applications	Specificity	Clone	Formats	Applications
Akt	Poly6034	Purified	WB	Notch 1	mN1A	Purified, Biotin, PE	ICFC, IHC, WB
β -catenin	Poly6001	Purified	IF, WB	Oct4 (Oct-4)	Poly6319	Purified	IF
c-Myc	9E10	Purified	ELISA, FC, IF, IHC, IP, WB	SOCS2	Poly6153	Purified	WB
EGFR	Poly6213	Purified	WB	SOCS3	SOC-25	Purified	WB
FGFR1	Poly6162	Purified	WB	SOCS6	Poly6155	Purified	WB
FGFR2	Poly6163	Purified	WB	SOX2 (COOH terminus)	Poly6309	Purified	WB
FOXD3	Poly6317	Purified	WB	SOX2 (NH2 terminus)	Poly6308	Purified	WB
FOXO3A (FKHRL1)	Poly6298	Purified	WB	STAT1	SAT-84	Purified	WB
GATA 3	Poly6071	Purified	WB	STAT2	Poly6245	Purified	IHC, IP, WB
Integrin β 1	Poly6004	Purified	WB	STAT3	Poly6246	Purified	WB
Integrin β 1 Phospho (Tyr783)	Poly6006	Purified	WB	STAT4	Poly6100	Purified	WB
Integrin β 1 Phospho (Tyr795)	Poly6005	Purified	WB	STAT5b	Poly6101	Purified	WB
mTOR	Poly6199	Purified	WB	TIF1b	20A1	Purified	WB
Nod2	NOD-15	Purified	WB	VEGF	poly6275	Purified	WB
				Xbp-1 (COOH terminus)	Poly6195	Purified	WB

See more cell biology antibodies at biolegend.com

Human Immunology Antibodies

Specificity	Clone	Formats	Applications
CD1a	HI149	Purified, PE, FITC, Biotin, PE/Cy7, PE/Cy5, APC, PB, A488, A647, A700	FC, IHC
CD1b	SN13 (K5-1B8)	Purified, FITC, Biotin	FC, IP, IF
CD2	RPA-2.10	Purified, PE, FITC, Biotin, PE/Cy5, LEAF™	FC, IHC, FA
	TS1/8	Purified, PE, FITC, LEAF™, PE/Cy5, PB	FC, FA
CD3	HIT3a	Purified, PE, FITC, Biotin, PE/Cy7, PE/Cy5, APC, A488, A647, A700, LEAF™, PerCP/Cy5.5, APC/Cy7	FC, IHC, IP, FA
	UCHT1	Purified, PE, FITC, Biotin, PE/Cy7, PE/Cy5, APC, A488, A647, A700, LEAF™, PerCP/Cy5.5, APC/Cy7, PB, PerCP	FC, IHC, IP, FA
	OKT3	Purified, FITC, LEAF™, PE, PB, APC, A488, A647	FC, WB, FA
CD4	RPA-T4	Purified, PE, FITC, Biotin, PE/Cy7, PE/Cy5, APC, A488, A647, A700, PerCP, PerCP/Cy5.5, APC/Cy7, PB	FC, IHC, FA
	OKT4	Purified, FITC, LEAF™, PE, PB, APC, A488, A647, A700, PE/Cy5, PE/Cy7, APC/Cy7	FC
CD5	UCHT2	Purified, PE, FITC, Biotin, APC, A488, A647, PE/Cy7, PerCP, PerCP/Cy5.5	FC, IHC, WB
CD6	MEM-98	Purified, PE	FC, IHC, IP, WB
CD7	MEM-186	Purified, FITC, PE/Cy5	IP, WB, FC
	CD7-6B7	PE/Cy5	FC
CD8a	HIT8a	Purified, PE, FITC, Biotin, PE/Cy7, PE/Cy5, APC, A488, A647, A700, PerCP, PerCP/Cy5.5	FC, IHC
	RPA-T8	Purified, PE, FITC, Biotin, PE/Cy7, PE/Cy5, APC, APC/Cy7, A647, A700, PB, PerCP, PerCP/Cy5.5, LEAF™	FC, IHC, FA
CD9	HI9a	Purified, PE, FITC	FC
CD10	MEM-78	Purified, PE, PE/Cy5	FC, IHC, IP, WB
	HI10a	Purified, PE, FITC, PE/Cy5, PE/Cy7, APC/Cy7	FC
CD11a	HI111	Purified, PE, FITC, Biotin, PE/Cy5, LEAF™, APC, A488, A647	FC, IHC, FA
CD11b	ICRF44	Purified, PE, Biotin, PE/Cy5, LEAF™, APC, A488, A647, PE/Cy7	FC, IHC, FA
CD11b (activated)	CBRM1/5	Purified, PE, Biotin, LEAF™, APC	FC, IP, FA
CD11c	3.9	Purified, PE, FITC, Biotin, PE/Cy7, PE/Cy5, APC, LEAF™, A488, A647	FC, IHC, FA
CD13	WM15	Purified, PE, APC, APC/Cy7, LEAF™	FC, IHC, FA
CD14	M5E2	Purified, PE, FITC, Biotin, PE/Cy7, LEAF™, APC, A488, A647, A700, PerCP/Cy5.5, APC/Cy7, PB	FC, IF, IHC, FA
CD15	HI98	Purified, PE, FITC, APC, A647, A488	FC, IHC
	W6D3	Purified, Biotin, PE, A647, FITC, APC, A488, PB, PerCP/Cy5.5, PE/Cy5, PerCP	FC
CD18	TS1/18	Purified, PE, FITC, PE/Cy5, LEAF™	FC, FA
CD19	HIB19	Purified, PE, FITC, Biotin, PE/Cy7, PE/Cy5, APC, A488, A647, A700, LEAF™, PerCP/Cy5.5, APC/Cy7, PB, PerCP	FC, IHC, FA
	2H7	Purified, PE, FITC, PE/Cy7, PE/Cy5, APC, A488, A647, A700, PerCP/Cy5.5, APC/Cy7, PB, PerCP	FC, IHC
CD22	HIB22	Purified, PE, FITC, PE/Cy5, APC	FC, IHC
CD24	ML5	Purified, PE, FITC, APC, A488, A647, PE/Cy7	FC, IF, IHC
CD25	BC96	Purified, PE, FITC, Biotin, PE/Cy7, PE/Cy5, APC, A488, A647, A700, PerCP/Cy5.5, APC/Cy7, PB	FC
	MEM-181	Purified, A647	FC
CD26	BA5b	Purified, PE, FITC, PE/Cy5	FC
CD29	TS2/16	Purified, PE, PE/Cy5, LEAF™, APC/Cy7, A488, A647, A700	FC, IHC, IP, FA
CD30	MEM-268	Purified, A647	FC
	BY88	Purified, APC, FITC, PE, A647	FC

Specificity	Clone	Formats	Applications
CD31	WM59	Purified, PE, PE/Cy7, LEAF™, FITC, A488, A647, PB, APC	FC, IF, IHC, FA
CD33	HIM3-4	Purified, FITC	FC
	WM53	Purified, PE, PE/Cy5, LEAF™, APC, PerCP/Cy5.5	FC, IHC, IP, WB, FA
CD34	4H11	Purified, PE, Biotin, A647, PerCP/Cy5.5	FC, WB
	581	Purified, APC, PE, PerCP/Cy5.5, FITC, A488, A647, PB, APC/Cy7, PE/Cy7, PerCP	FC
	561	Purified, FITC, PE, APC	FC
CD36	TR9	FITC	FC
	5-271	Purified, FITC, PE, APC, APC/Cy7	FC
CD38	HIT2	Purified, PE, FITC, Biotin, PE/Cy7, PE/Cy5, APC, A488, A647, A700, PerCP, PerCP/Cy5.5	FC, IHC
CD40	G28.5	Purified, FITC, LEAF™, PE, A647	FC, FA
	HB14	Purified, PE, FITC, LEAF™, APC	FC, FA
	5C3	Purified, APC, PE, LEAF™, FITC, A488, A647, PerCP/Cy5.5, PE/Cy5	FC, FA
CD41	HIP8	Purified, FITC, LEAF™, PE, APC, PE/Cy5	FC, IHC
CD42b	HIP1	Purified, FITC, LEAF™, PE, APC, PerCP	FC, IHC, WB, FA
CD43	MEM-59	Purified, FITC	FC, IHC, IP, WB
CD45	HI30	Purified, PE, FITC, Biotin, PE/Cy7, PE/Cy5, APC, A488, A647, A700, PerCP/Cy5.5, APC/Cy7, PB, PerCP	FC, IHC, WB
CD45/CD14	HI30/M5E2	FITC, PE	FC
CD45RA	HI100	Purified, PE, FITC, Biotin, PE/Cy5, APC, A488, A700, PB, PerCP/Cy5.5	FC, IHC
CD45RB	MEM-55	Purified, PE	IP, IHC, WB, FC
CD45RO	UCHL1	Purified, PE, FITC, Biotin, PE/Cy5, APC, A488, A647, A700, PB, PerCP/Cy5.5	FC, IHC, IP, WB
CD46	MEM-258	Purified, FITC, LEAF™	FC, IP, WB, FA
CD47	HCD47	Purified, Biotin, PE	FC
	CC2C6	Purified, Biotin, PE, FITC, PerCP/Cy5.5	FC
CD48	MEM-102	FITC	FC
CD49a	TS2/7	Purified, Biotin, FITC, PE, A647	FC, IP, IHC
CD49b	AK-7	Purified, FITC, A488	FC, IHC
CD49d	9F10	Purified, PE, PE/Cy5, LEAF™, APC	FC, IHC, FA
CD49e	NKI-SAM-1	Purified, Biotin, PE, LEAF™, FITC	FC, IP, IHC, FA
CD49f	GoH3	Purified, PE, Biotin, LEAF™, FITC, APC, A488, A647, PB, PerCP/Cy5.5	FC, IHC, IP, FA
CD51	NKI-M9	Purified, Biotin, PE, LEAF™, FITC	FC, IP, IHC, FA
CD51/61	23C6	Purified, PE, FITC, Biotin, A488, A647, LEAF™	FC, IHC, FA
CD54	MEM-111	FITC, PE	FC, ICFC
	HCD54	Purified, FITC, LEAF™, Biotin, APC, PE/Cy5, A488, A647, PB	FC, FA
CD55	JS11	Purified, PE, FITC, Biotin, APC, PE/Cy5, PE/Cy7	FC
CD56 (NCAM)	MEM-188	Purified, PE, FITC, Biotin, A488, A647, LEAF™, PE/Cy5, PE/Cy7, PB	FC, IHC, IP, WB
	HCD56	Purified, FITC, LEAF™, PE, PB, APC, A488, A647, A700, Biotin, PE/Cy5, PE/Cy7, APC/Cy7	FC
CD58	HCD58	Purified, Biotin, PE, A647	FC
	TS2/9	Purified, Biotin, PE, A647, PE/Cy5	FC, IP, IHC
CD59	p282 (H19)	Purified, PE, FITC	FC
CD66b	G10F5	Purified, FITC	IHC, FC
CD68	Y1/82A	Purified, Biotin, FITC, PE	ICFC, IHC
CD71	MEM-75	Purified, PE	FC, IP, WB
	CY1G4	Purified, FITC, PE	FC, IP, WB
CD75	LN1	Purified, Biotin, FITC	FC, IHC, IP
CD79a	HM47	Purified, APC, PE, PerCP/Cy5.5	ICFC, WB, IP, IHC



Specificity	Clone	Formats	Applications
CD90 (Thy1)	F15-42-1	Biotin, A647	FC
	5E10	Purified, Biotin, PE, PE/Cy5, FITC, APC, A647, A700, PerCp/Cy5.5	FC, IP, IHC, FA
CD93	VIMD2	Purified, Biotin, PE	FC
CD97	VIM3b	Purified, FITC, PE, A647	FC, WB, IP
CD105	MEM-226	Purified, FITC	FC, IP, WB
	43A3	Purified, PE, FITC, Biotin, APC, A488, A647	FC
CD106	STA	Purified, PE, Biotin, PE/Cy5, APC	ELISA, FC, IHC, IP
CD109	W7C5	Purified, Biotin, PE	FC
CD114	LMM741	Purified, PE	FC
CD116	4H1	Purified, PE, FITC, Biotin	FC, IHC, IP
CD117 (c-kit)	104D2	Purified, PE, Biotin, APC, PE/Cy5, PE/Cy7, PerCp/Cy5.5	FC, IF, IHC, IP
	A3C6E2	Purified, Biotin, PE, LEAF™, PE/Cy5, PE/Cy7, PerCp/Cy5.5	FC, FA
CD123	6H6	Purified, PE, FITC, Biotin, PE/Cy5, PE/Cy7, PerCp/Cy5.5	FC, IHC, IP, WB
CD126	BL-126	A647	FC
CD127 (IL-7Ra)	HCD127	Purified, A488, A647, PerCp/Cy5.5	FC
CD135 (Flt-3/Flk-2)	BV10A4H2	Purified, PE, Biotin, APC, PE/Cy5	FC
CD138	1D4	FITC, PerCp/Cy5.5	FC
CD140a	16A1	Purified, Biotin, PE	FC
CD140b	18A2	Purified, Biotin, PE, APC	FC
CD144	BV9	Purified	FC, WB, IF, IP, Block
CD150 (SLAMF)	A12 (7D4)	Purified, PE, FITC, Biotin, A488, LEAF™	FC, IHC, IP, FA
CD164	67D2	Purified, Biotin, PE, FITC	FC
CD165	SN2 (N6-D11)	FITC, PE	FC
CD172a (SIRPa)	SE5A5	Purified, Biotin, PE, PE/Cy7	FC
CD172b (SIRPb)	B4B6	Purified, Biotin, PE	FC
CD183 (CXCR3)	TG1/CXCR3	A488, A647, PerCp/Cy5.5	FC
CD184 (CXCR4)	12G5	Purified, Biotin, PE, PE/Cy5, PE/Cy7, APC, LEAF™	FC, IF, IHC, FA
CD185 (CXCR5)	TG2/CXCR5	PerCp/Cy5.5	FC
CD191 (CCR1)	TG4/CCR1	A647	FC
CD192 (CCR2)	TG5/CCR2	A647, PerCp/Cy5.5	FC
CD194 (CCR4)	TG6/CCR4	A647, PerCp/Cy5.5, PE/Cy7	FC
CD195 (CCR5)	HEK1/85a	Purified, PE, FITC, A488, A647, A700, PerCp/Cy5.5	FC, IF
CD195 (CCR5)	T21/8	Purified, Biotin, PE, LEAF™	FC, IF, ELISA Capture, FA
	R-C10	Purified	WB
CD195 (CCR5) Phospho (Ser337)	V14/2	Purified, Biotin	FC, IF, ELISA Detection
	E11/19	Purified, Biotin, PE	FC, IF, ELISA Detection
CD196 (CCR6)	TG7/CCR6	A488, A647, PerCp/Cy5.5, PE	FC
CD197 (CCR7)	TG8/CCR7	A488, A647, PerCp/Cy5.5, APC	FC
CD200 (OX2)	OX-104	Purified, Biotin, PE	FC, IHC
CD202b (Tie2/Tek)	33.1 (Ab33)	Purified, Biotin, PE, A488, A647	FC, IP, WB, IHC (frozen), ELISA
CD203c (E-NPP3)	NP4D6	Purified, Biotin, PE	FC

Specificity	Clone	Formats	Applications
CD231 (TALLA)	SN1a (M3-3D9)	Purified, PE	FC, IHC, WB
CD235ab	HIR2	Purified, PE, FITC, PB, APC, PE/Cy5	FC
CD271	ME20.4	Purified, FITC	FC, Inhib, IP, WB, IHC
CD281 (TLR1)	GD2.F4	Purified, Biotin	FC
CD282 (TLR2)	TL2.1	Purified, PE, FITC, LEAF™, A488, A647	FC, IHC, IP, WB, FA
CD284 (TLR4)	HTA125	Purified, PE, Biotin, LEAF™	FC, IHC, FA
CD309 (VEGFR2)	HKDR-1	A647, PerCp/Cy5.5	FC
CD318 (CDCP1)	CUB1	Purified, FITC, PE, APC, A647, A488	FC
CD324 (E-Cadherin)	67A4	Purified, FITC, PE, APC, A647, A488, PerCp/Cy5.5	FC
CD326 (Ep-CAM)	9C4	Purified, FITC, PE, APC, A647, A488, PerCp/Cy5.5	FC
CD334 (FGFR4)	4FR6D3	Purified, Biotin, PE	FC
CD338 (ABCG2)	5D3	Purified, FITC, Biotin, PE, A488, A647, A700, PB, PerCp/Cy5.5	FC
CD340 (erbB2/HER-2)	24D2	Purified, FITC, PE, APC, A647, A488	FC
CD344 (Frizzled-4)	CH3A4A7	Purified, Biotin, PE, APC	FC
CD349 (Frizzled-9)	W3C4E11	Purified, Biotin, A647	FC
C3AR	hC3aRZ8	Purified, PE	FC, IP
DLL1	MHD1-314	Purified, PE	FC
DLL4	MHD4-46	Purified, PE, LEAF™	FC
erbB3/HER-3	1B4C3	Purified, Biotin, PE, APC	FC
HLA-A,B,C	W6/32	Purified, PE, FITC, Biotin, APC, PE/Cy5, PerCp, PB, LEAF™, A488, A647	FC, IHC, IP, WB, FA
HLA-DQ	HLADQ1	Purified, PE, FITC	FC, IHC
HLA-DR	L243	Purified, PE, FITC, Biotin, PE/Cy7, PE/Cy5, APC, A488, A647, A700, PerCp/Cy5.5, APC/Cy7, PB, PerCp, LEAF™	FC, IHC, IP, WB, FA
	LN3	Purified, Biotin, PE, FITC, A488, A647, A700, PB	FC, IHC, IP
Jagged 2	MHJ2-523	Purified, PE	FC
MSC (W3D5)	W3D5	Purified, Biotin, PE	FC
MSC (W5C5)	W5C5	Purified, Biotin, PE	FC
MSC (W7C6)	W7C6	Purified, Biotin, PE	FC
MSC and NPC (W4A5)	W4A5	Purified, Biotin, PE	FC
MSCA-1 (MSC, W8B2)	W8B2	Purified, Biotin, PE, APC	FC
myeloid antigen	BM-1	Purified, Biotin, FITC	ICFC, IHC, IP
Notch 3	MHN3-21	Purified, PE, LEAF™	FC
NPC (57D2)	57D2	Purified, Biotin, PE	FC
Podoplanin	NC-08	Purified, PE, A488, A6	FC, IHC, IP, WB, ELISA
PSMA	LNI-17	A488	FC
SSEA-3	MC-631	Purified, PE, A488, A647	FC, IF, IHC
SSEA-4	MC-813-70	Purified, FITC, Biotin, PE, A488, A647	FC, IP, IF, IHC
TCR a/b	IP26	Purified, PE, FITC, Biotin, PE/Cy5, A488, A647	FC
TRA-1-60-R	TRA-1-60-R	Purified, Biotin, PE, A488, A647	FC, IF, IHC, IP, WB
TRA-1-81	TRA-1-81	Purified, Biotin, PE, A647	FC, IF, IHC, IP, WB

See more human antibodies at biologend.com

Human Cytokine Antibodies

Specificity	Clone	Formats	Applications	Specificity	Clone	Formats	Applications
IL-1 β	JK1B-1	Purified, A647, FITC, LEAF™	ELISA/ELISPOT Capture, ICFC	IFN- γ	4S,B3	Purified, Biotin, FITC, PE, PE/Cy7, APC, A488, A647, A700, PerCP/Cy5.5, PB, LEAF™	ELISA/ELISPOT Detection, ICFC, WB
IL-1RA	JK1RA-1	Purified	ELISA Capture	MCP-1	5D3-F7	Purified, PE, Biotin, LEAF™	ELISA Capture, ICFC, IHC, IP, WB, Neutr
IL-2	MQ1-17H12	Purified, PE, FITC, PE/Cy7, APC, A488, A647, A700, PerCP/Cy5.5, PB, LEAF™	ELISA/ELISPOT Capture, ICFC, IHC, IP, Neut	NGF	JKhNGF-1	Purified	ELISA Capture
IL-9	MH9A4	Purified, PE, A647	ELISA Capture, ICFC	RANTES	BL-5030	Purified	ELISA
IL-10	JES3-9D7	Purified, PE, PE/Cy7, APC, A488, A647, LEAF™	ELISA/ELISPOT Capture, ICFC, IHC, Neut, WB	TNF- α	MAb11	Purified, Biotin, FITC, PE, PE/Cy7, APC, A488, A647, PerCP/Cy5.5, PB, LEAF™	ELISA/ELISPOT Detection, ICFC, IHC, Neutr
IL-17A	BL168	Purified, PE, FITC, PE/Cy7, APC/Cy7, A488, A647, A700, PerCP/Cy5.5, PB, LEAF™	ICFC	TNF- β	359-81-11	Purified, Biotin, PE, LEAF™	ICFC, IHC, Neut
IL-21	3A3-N2	Purified	ELISA Capture	TRAIL-R1 (DR4, CD261)	DJR1	Purified, Biotin, PE	FC
IL-23	HLT2736	Purified	IHC, IP, WB	TREM-1	TREM-26	Purified, PE, Biotin, LEAF™	Activation, FC, WB, ELISA Detection
IL-32	KU32-56	Purified	ELISA Capture, WB, IF, IP	TSLP	15B11.3	Purified, LEAF™	ELISA, Neutr
FGF-basic	JKFb-1	Purified, LEAF™	ELISA Capture, ELISPOT	TWEAK	CARL-1	Purified, PE, Biotin, LEAF™	FC, IHC, Neut, ELISA Detection
G-CSF	BVD13-3A5	Purified, LEAF™	ELISA Capture, IHC				
GM-CSF	BVD2-21C11	Purified, PE, Biotin	ICFC, IHC, IP, WB				

See more human cytokine antibodies at biolegend.com

Human ELISAs

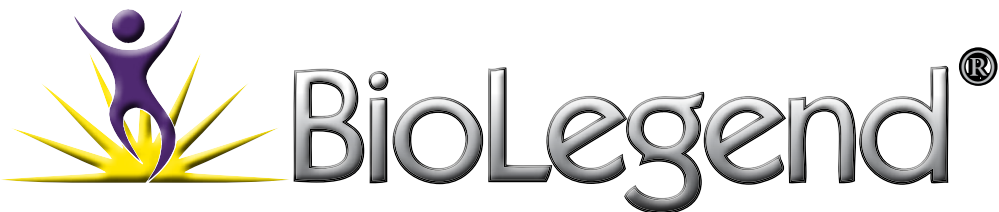
LEGEND MAX™ Kits with pre-coated plates	ELISA MAX™ Deluxe Sets	ELISA MAX™ Standard Sets
LEGEND MAX™ Human FGF-basic ELISA Kit	Human IFN- γ ELISA MAX™ Deluxe	Human IFN- γ ELISA MAX™ Standard
LEGEND MAX™ Human GM-CSF ELISA Kit	Human IL-2 ELISA MAX™ Deluxe	Human IL-2 ELISA MAX™ Standard
LEGEND MAX™ Human IFN- γ ELISA Kit	Human IL-4 ELISA MAX™ Deluxe	Human IL-4 ELISA MAX™ Standard
LEGEND MAX™ Human IL-15 ELISA Kit	Human IL-9 ELISA MAX™ Deluxe	Human IL-5 ELISA MAX™ Standard
LEGEND MAX™ Human IL-17A ELISA Kit	Human IL-15 ELISA MAX™ Deluxe	Human IL-6 ELISA MAX™ Standard
LEGEND MAX™ Human IL-17F ELISA Kit	Human IL-22 ELISA MAX™ Deluxe	Human IL-8 ELISA MAX™ Standard
LEGEND MAX™ Human IL-27 ELISA Kit	Human IL-32 α ELISA MAX™ Deluxe	Human IL-10 ELISA MAX™ Standard
LEGEND MAX™ Human IL-28A ELISA Kit	Human FGF-basic ELISA MAX™ Deluxe	Human IL-12 (p70) ELISA MAX™ Standard
LEGEND MAX™ Human IL-29 ELISA Kit	Human GM-CSF ELISA MAX™ Deluxe	Human GM-CSF ELISA MAX™ Standard
LEGEND MAX™ Human IL-33 ELISA Kit	Human TSLP ELISA MAX™ Deluxe	Human TNF- α ELISA MAX™ Standard

See more human ELISA products at biolegend.com

Human Recombinant Proteins

Recombinant Human IL-1 α (carrier-free)	BA, Block	Recombinant Human IL-17F (carrier-free)	BA
Recombinant Human IL-1 β (carrier-free)	BA, Block	Recombinant Human IL-21 (ELISA Std.)	ELISA
Recombinant Human IL-2 (carrier-free)	BA, block	Recombinant Human IL-22 (carrier-free)	BA, Block
Recombinant Human IL-3	BA, ELISA	Recombinant Human IFN- γ (carrier-free)	BA
Recombinant Human IL-4	BA, Block, ELISA	Recombinant Human FGF-basic/145aa (carrier-free)	BA
Recombinant Human IL-5	BA, ELISA	Recombinant Human G-CSF	BA, ELISA
Recombinant Human IL-6 (carrier-free)	BA	Recombinant Human GM-CSF (carrier-free)	Block, Bioassay
Recombinant Human IL-7	BA, ELISA	Recombinant Human MCP-1/CCL2 (carrier-free)	BA, Block
Recombinant Human IL-8	BA, ELISA	Recombinant Human PDGF-BB (carrier-free)	BA, Block
Recombinant Human IL-10 (carrier-free)	BA, Block	Recombinant Human RANTES/CCL5 (carrier-free)	BA, Block
Recombinant Human IL-12 (p70) (carrier-free)	BA	Recombinant Human SDF-1 α (CXCL12) (carrier-free)	BA
Recombinant Human IL-13 (carrier-free)	BA, Block	Recombinant Human TWEAK (CD255) (carrier-free)	BA
Recombinant Human IL-15 (carrier-free)	BA, Block	Recombinant Human TGF- β 1 (carrier-free)	BA, Block
Recombinant Human IL-17A (carrier-free)	BA	Recombinant Human TNF- α (carrier-free)	BA
Recombinant Human IL-17A (ELISA Std.)	ELISA		
Recombinant Human IL-17A/IL-17F Heterodimer (carrier-free)	BA, Block		

See more human recombinant proteins at biolegend.com



BioLegend Contact Information

Customer Service

US & Canada Toll-Free: 1.877.246.5343 (877-BIOLEGEND)

International: 1.858.768.5800

email: customerserv@biolegend.com

Technical service:

US & Canada Toll-Free: 1.877.273.3103

International: 1.858.768.5801

email: techserv@biolegend.com

US Headquarters:

11080 Roselle St.

San Diego, CA 92121

International Offices:

BioLegend Japan KK

8F, SB bldg., 1-4-6, Nezu, Bunkyo-ku, Tokyo

113-0031, Japan

Tel: +81-3-3823-9071

Fax: +81-3-3823-9072

Email: supportjp@biolegend.com

BioLegend UK Ltd.

Munro House

Trafalgar Way

Bar Hill, Cambridge CB23 8SQ

United Kingdom

Tel: +44 (0)1954 785008

Fax: +44 (0)1954 770411

Email: infoeurope@biolegend.com

BioLegend Europe BV

Ambachtweg 5

1422 DS Uithoorn

The Netherlands

Tel: +31-297-522488

Fax: +31-297-522756

Email Inquiries: infoeurope@biolegend.com

Email Technical Support: techeurope@biolegend.com

BioLegend GmbH (Sales & Technical Support)

Zum Grundtal 1

D- 54341 Fell

Germany

Tel: +49 (0) 6502- 4042086

Fax: +49 (0) 6502- 4042087

Email: infoeurope@biolegend.com

For a complete listing of worldwide distributors, visit:

biolegend.com/distributors