

# New PhosphoPlus® Antibody Duets

## It takes two to tango

© 07/2009 Cell Signaling Technology, Inc. PhosphoPlus®, XMT™, XP™, eXceptional Monoclonal Technology™, eXceptional Performance™ and Cell Signaling Technology® are trademarks of Cell Signaling Technology, Inc. Selected rabbit monoclonal antibodies are produced under license (granting certain rights including those under U. S. Patent No. 5,675,063 and in some instances U.S. patent No. 7,429,487) from Eptomics, Inc.

### eXceptional Monoclonal Technology™

**XMT™**, an eXceptional Monoclonal Technology™ from Cell Signaling Technology®, enables the development and production of antibodies with eXceptional Performance™ (**XP™**). This revolutionary and proprietary technology provides us with access to a broad range of antibody-producing B cells unattainable with traditional monoclonal technologies, allowing more comprehensive screening and the identification of **XP™** monoclonal antibodies with:

#### + eXceptional specificity

As with all of our antibodies, the antibody is specific to your target of interest, saving you valuable time and resources.

#### + eXceptional sensitivity

The antibody will provide a stronger signal for your target protein in cells and tissues, allowing you to monitor expression of low levels of endogenous proteins, saving you valuable materials.

#### + eXceptional stability and reproducibility

XMT combined with our stringent quality control ensures maximum lot-to-lot consistency and the most reproducible results.

#### = eXceptional performance

**XMT** coupled with our extensive antibody validation and stringent quality control delivers **XP** monoclonal antibodies with eXceptional Performance in the widest range of applications.

Find out more at [www.cellsignal.com/xmt](http://www.cellsignal.com/xmt)

www.cellsignal.com



UNPARALLELED PRODUCT QUALITY, VALIDATION AND TECHNICAL SUPPORT

XP™ Monoclonal Antibodies

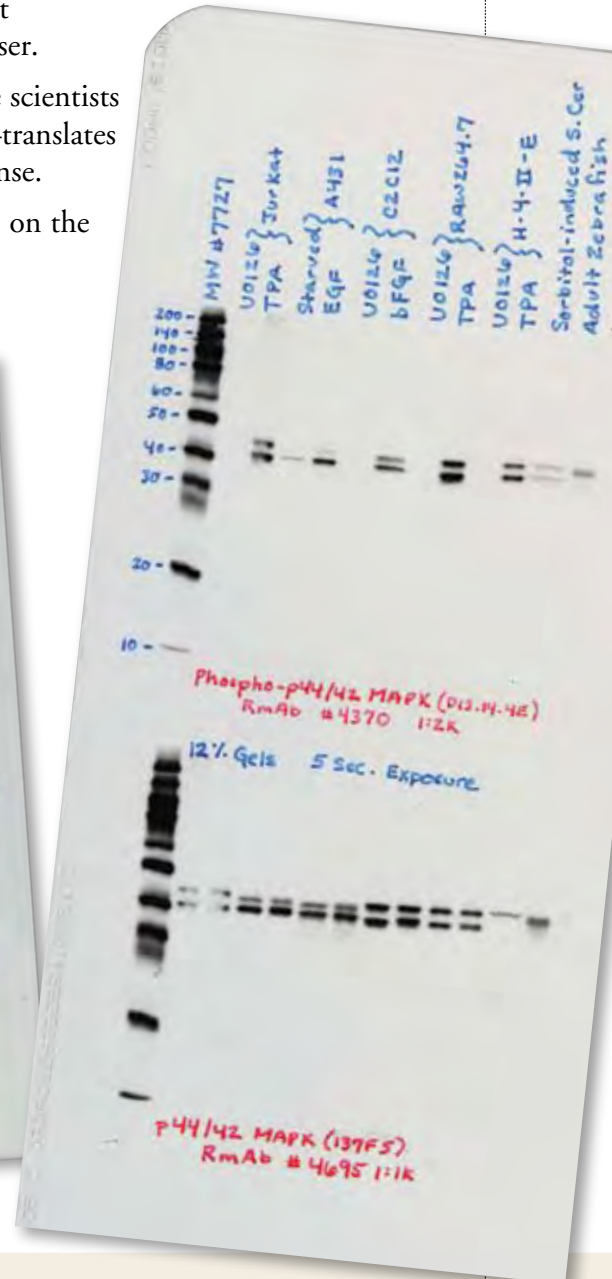
# Each new **Duet** contains the highest performing activation-state and total protein antibodies packaged together for your convenience.

- Cell Signaling Technology's antibodies offer unsurpassed sensitivity, specificity and performance.
- Extensive in-house validation means that optimization is not left up to you, the user.
- Technical support provided by the same scientists who produce and validate the products—translates into a thorough, fast and accurate response.
- Over 20 Duets now available with more on the way—check our website daily.

For our our newly released PhosphoPlus® Duet Product listing visit [www.cellsignal.com](http://www.cellsignal.com)

Cat #	Product Name	Duet Includes
#8200	<b>PhosphoPlus® Akt (Ser473) Antibody Duet featured</b>	#4060 Phospho-Akt (Ser473) (D9E) XP™ Rabbit mAb* #4691 Akt (pan) (C67E7) Rabbit mAb
#8205	<b>PhosphoPlus® Akt (Thr308) Antibody Duet</b>	#2965 Phospho-Akt (Thr308) (C31E5E) Rabbit mAb #4691 Akt (pan) (C67E7) Rabbit mAb
#8208	<b>PhosphoPlus® AMPK-alpha (Thr172) Antibody Duet</b>	#2535 Phospho-AMPKα (Thr172) (40H9) Rabbit mAb #2532 AMPKα Antibody
#8220	<b>PhosphoPlus® ATF-2 (Thr71) Antibody Duet</b>	#5112 Phospho-ATF-2 (Thr71) (11G2) Rabbit mAb #9226 ATF-2 (20F1) Rabbit mAb
#8223	<b>PhosphoPlus® Bad (Ser112) Antibody Duet</b>	#5284 Phospho-Bad (Ser112) (40A9) Rabbit mAb #9239 Bad (D24A9) XP™ Rabbit mAb*
#8202	<b>PhosphoPlus® Caspase-3 (Cleaved, Asp175) Antibody Duet</b>	#9664 Cleaved Caspase-3 (Asp175) (5A1E) Rabbit mAb #9665 Caspase-3 (8G10) Rabbit mAb
#8212	<b>PhosphoPlus® CREB (Ser133) Antibody Duet</b>	#9198 Phospho-CREB (Ser133) (87G3) Rabbit mAb #9197 CREB (48H2) Rabbit mAb
#8213	<b>PhosphoPlus® GSK-3β (Ser9) Antibody Duet</b>	#9322 Phospho-GSK-3β (Ser9) (D3A4) XP™ Rabbit mAb* #9315 GSK-3β (27C10) Rabbit mAb
#8219	<b>PhosphoPlus® IκBα (Ser32/Ser36) Antibody Duet</b>	#9246 Phospho-IκBα (Ser32/36) (5A5) Mouse mAb #4814 IκBα (L35A5) Mouse mAb (Amino-terminal Antigen)
#8224	<b>PhosphoPlus® Jak2 (Tyr1007/Tyr1008) Antibody Duet</b>	#3776 Phospho-Jak2 (Tyr1007/1008) (C80C3) Rabbit mAb #3230 Jak2 (D2E12) XP™ Rabbit mAb*
#8221	<b>PhosphoPlus® c-Jun (Ser63) Antibody Duet</b>	#2361 Phospho-c-Jun (Ser63) (54B3) Rabbit mAb #9165 c-Jun (60A8) Rabbit mAb
#8222	<b>PhosphoPlus® c-Jun (Ser73) Antibody Duet</b>	#3270 Phospho-c-Jun (Ser73) (D47G9) XP™ Rabbit mAb* #9165 c-Jun (60A8) Rabbit mAb
#8211	<b>PhosphoPlus® MEK1/2 (Ser217/Ser221) Antibody Duet</b>	#2338 Phospho-MEK1/2 (Ser221) (166F8) Rabbit mAb #9126 MEK1/2 (47E6) Rabbit mAb
#8214	<b>PhosphoPlus® NF-κB p65/RelA (Ser536) Antibody Duet</b>	#3033 Phospho-NF-κB p65 (Ser536) (93H1) Rabbit mAb #4764 NF-κB p65 (C22B4) Rabbit mAb
#8216	<b>PhosphoPlus® Notch1 (Cleaved, Val1744) Antibody Duet</b>	#TBD Notch1 (Val1744, small subunit) cleaved #3608 Notch1 (D1E11) XP™ Rabbit mAb*
#8203	<b>PhosphoPlus® p38 MAPK (Thr180/Tyr182) Antibody Duet</b>	#4511 Phospho-p38 MAPK (Thr180/Tyr182) (D3F9) XP™ Rabbit mAb* #9212 p38 MAPK Antibody
#8201	<b>PhosphoPlus® p44/42 MAPK (Erk1/2) (Thr202/Tyr204) Antibody Duet featured</b>	#4370 Phospho-p44/42 MAPK (Erk1/2) (Thr202/Tyr204) (D13.14.4E) XP™ Rabbit mAb* #4695 p44/42 MAPK (Erk1/2) (137F5) Rabbit mAb
#8218	<b>PhosphoPlus® Met (Tyr1234/Tyr1235) Antibody Duet</b>	#3077 Phospho-Met (Tyr1234/1235) (D26) XP™ Rabbit mAb* #3127 Met (25H2) Mouse mAb
#8209	<b>PhosphoPlus® p70 S6k1 (Thr389) Antibody Duet</b>	#9234 Phospho-p70 S6 Kinase (Thr389) (108D2) Rabbit mAb #2708 p70 S6 Kinase (49D7) Rabbit mAb
#8207	<b>PhosphoPlus® S6 Ribosomal Protein (Ser235/Ser236) Antibody Duet</b>	#4858 Phospho-S6 Ribosomal Protein (Ser235/236) (D57.2.2E) XP™ Rabbit mAb* #2217 S6 Ribosomal Protein (5G10) Rabbit mAb
#8217	<b>PhosphoPlus® Stat1 (Tyr701) Antibody Duet</b>	#9167 Phospho-Stat1 (Tyr701) (58D6) Rabbit mAb #9175 Stat1 (42H3) Rabbit mAb (Human Specific)
#8204	<b>PhosphoPlus® Stat3 (Tyr705) Antibody Duet</b>	#9145 Phospho-Stat3 (Tyr705) (D3A7) XP™ Rabbit mAb* #4904 Stat3 (79D7) Rabbit mAb
#8215	<b>PhosphoPlus® Stat5 (Tyr694) Antibody Duet</b>	#9359 Phospho-Stat5 (Tyr694) (C11C5) Rabbit mAb #9358 Stat5 (3H7) Rabbit mAb

\* For more information on XP™ Antibodies, please visit [www.cellsignal.com/xmt](http://www.cellsignal.com/xmt)



#8201 PhosphoPlus® p44/42 MAPK (Erk1/2) (Thr202/Tyr204) Antibody Duet



#8200 PhosphoPlus® Akt (Ser473) Antibody Duet