

# U:GENIUS

Gel imaging at a touch



# U:GENIUS

Simply Genius. Designed to make your gel imaging simple, quick and easy. No set up, no external computer - just a complete imaging system for all your 1D needs.

A smooth and intuitive touch screen ensures that anyone can use a U:Genius with virtually no previous experience of gel imaging.

U:Genius - from switch-on to perfect image at a touch.



SYNGENE

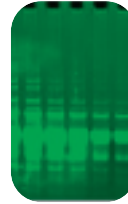
## U:Genius applications

Use the large colour touch screen to navigate your way through the functions of U:Genius. The icon driven menu is both intuitive and easily understood. All functions from image capture, manipulation, printing to archiving are at the touch of a button.



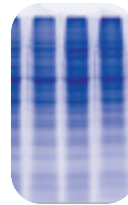
### DNA

With a U:Genius you can use the UV transilluminator to capture images of DNA gels stained with Ethidium Bromide



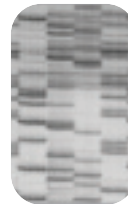
### Blue light applications

The blue light converter allows you to view some fluorescent stains with better clarity and with less gel damage



### Visible light applications

With the transmitted visible light or using the epi white light facility, a U:Genius can be used to view gels which have been stained with silver stain and Coomassie blue. You can also view tissues, slides and films



### AutoRads

The U:Genius features a mega resolution camera which is ideal for capturing images requiring high detail. This is especially true when looking for separation between bands and spots. Capturing high quality images of Autorads is one of the strengths of the U:Genius



### Other fluorescence applications

Another option includes the use of transmitted blue light. This lighting option makes U:Genius suitable for generating images of a wide range of fluorescent samples

Examples: GFP, SYBR®Green, SYBR Gold, SYBR Safe, SYPRO Ruby, Safe View, Flamingo, Pro-Q Diamond, Pro-Q Emerald, Fluorescein, Rhodamine Red™, Texas Red®, Deep Purple™ and others



### Spot blots

Capturing and analysing spot blots is another very simple application for U:Genius



## LIVE IMAGE

capture the image you see with a single touch



## AUTO EXPOSURE

automatic exposure control lets U:Genius give you the perfect image



## EXPOSURE CONTROL

manually set the exposure settings



## SATURATION DETECTION

see which areas of the image are over exposed



## NEUTRAL FIELDING

correction of any uneven background illumination



## EDR

Syngene's patented extended dynamic range function



## SAVE/LOAD

save or load image to USB memory stick, internal hard drive or use the networking capabilities



## ZOOM

zoom image to view areas in greater detail



## PRINT

send image to attached printer



## ROTATE

rotate image by degrees - no more "skewed" images



## SHARPEN

add sharpening to enhance band edges



## SMOOTH

even out background noise when viewing



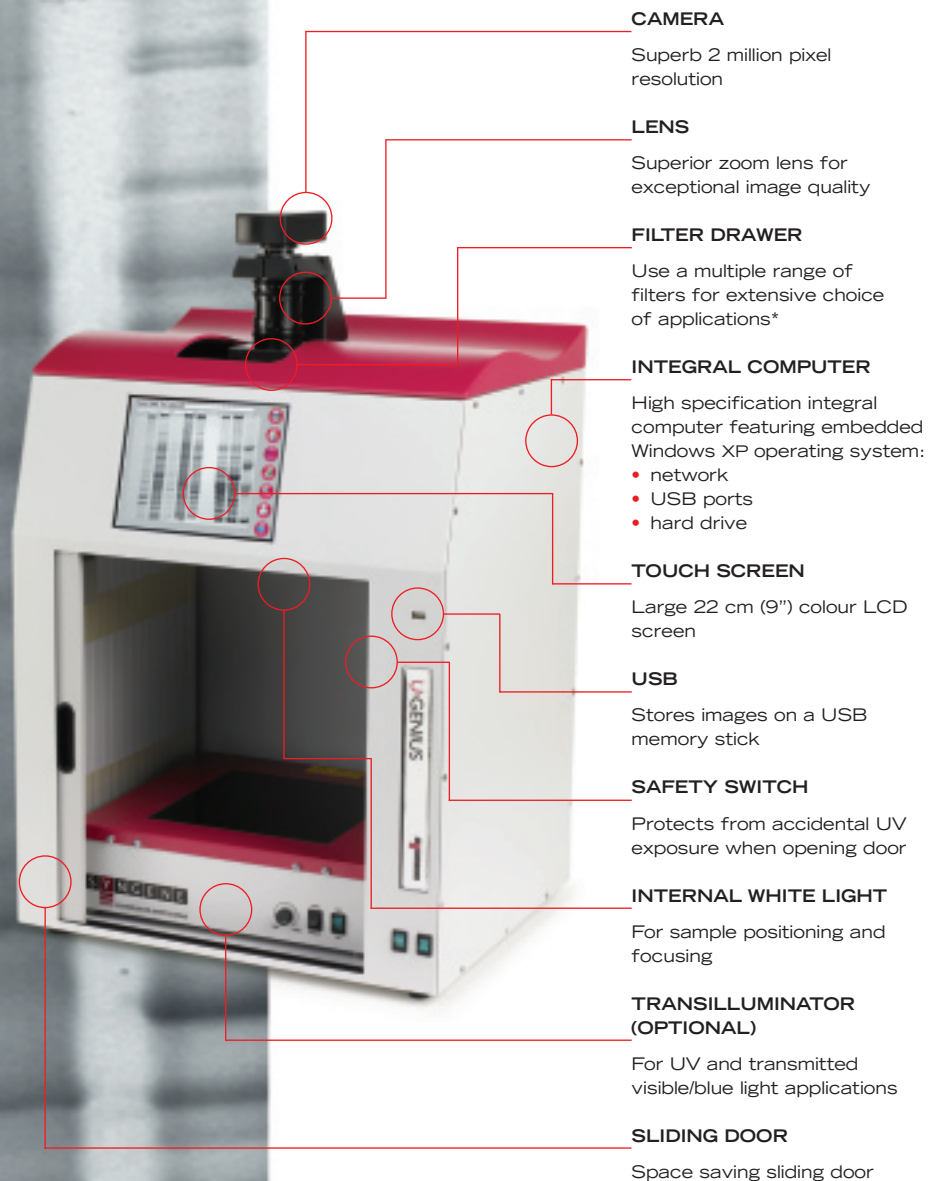
## INVERT

view the reverse image



## ANNOTATION

add annotation (text, shapes, lines) to images



## CAMERA

Superb 2 million pixel resolution

## LENS

Superior zoom lens for exceptional image quality

## FILTER DRAWER

Use a multiple range of filters for extensive choice of applications\*

## INTEGRAL COMPUTER

High specification integral computer featuring embedded Windows XP operating system:

- network
- USB ports
- hard drive

## TOUCH SCREEN

Large 22 cm (9") colour LCD screen

## USB

Stores images on a USB memory stick

## SAFETY SWITCH

Protects from accidental UV exposure when opening door

## INTERNAL WHITE LIGHT

For sample positioning and focusing

## TRANSILLUMINATOR (OPTIONAL)

For UV and transmitted visible/blue light applications

## SLIDING DOOR

Space saving sliding door

# U:GENIUS

Simply Genius. Designed to make your gel imaging simple, quick and easy. No set up, no external computer - just a complete imaging system for all your 1D needs.

## U:Genius specification

Camera	16 bit EDR
CCD	1/2 inch
CCD resolution	2m pixels
Zoom	8 - 48 manual zoom
Lens	F1.2
Detection sensitivity	0.01 ng
Max gel size	24 x 30 cm
Data types	BMP, TIFF, JPEG
Image storage	USB, hard disk and network
Image enhancements	Sharpen, smooth, rotate, invert, annotate, zoom

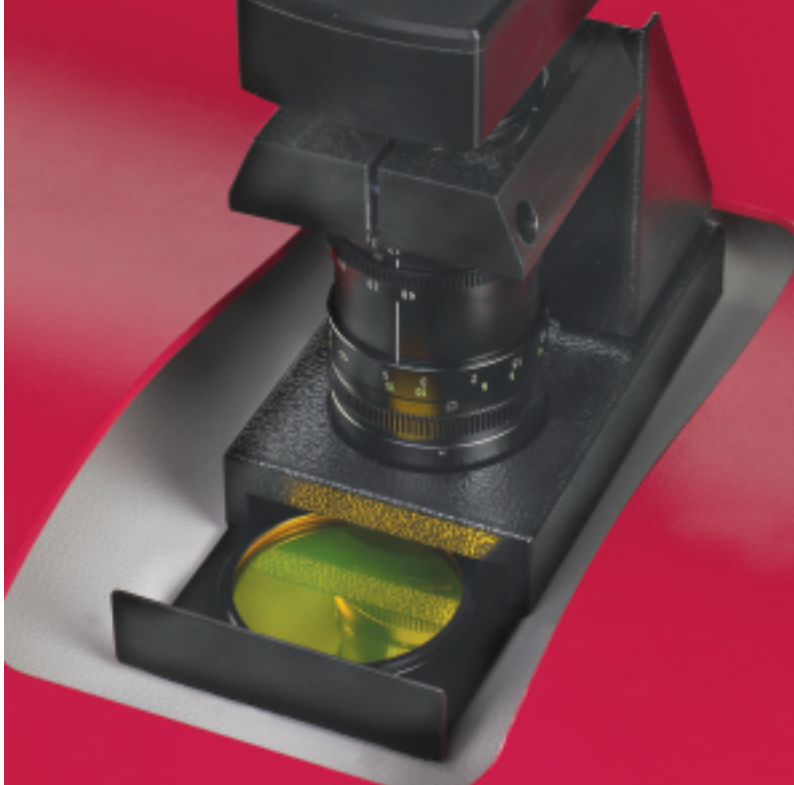


## Ordering details/options

UGEN	U:Genius system
------	-----------------

### Options

GVM20D	<b>Transilluminator</b> Wavelength 302nm Filter area 20 x 20cm
GVM30D	<b>Transilluminator</b> Wavelength 302nm Filter area 20 x 30cm
GVM25/30D	<b>Transilluminator</b> Wavelength 302nm Filter area 25 x 30cm
GVL20D	<b>Transilluminator</b> Wavelength 302/365nm Filter area 20 x 20cm
GVL30D	<b>Transilluminator</b> Wavelength 302/365nm Filter area 20 x 30cm
GVL25/30D	<b>Transilluminator</b> Wavelength 302/365nm Filter area 25 x 30cm
CONVERTBLUE	<b>UV-to blue light converter</b> Area 25 x 30cm
CONVERT-NOVAGLO2	<b>UV-to-visible light converter</b> Area 30.5 x 33cm
FILTSG-58	<b>SYBR Gold filter</b>
FILTSP-58	<b>Short Pass filter</b>
FILTLP-58	<b>Long Pass filter</b>
P93DW	<b>Thermal Printer Digital, USB</b> Supplied with USB cable
K65HM	<b>Thermal Paper Matt</b>
K91HG	<b>Thermal Paper Gloss</b>



**Syngene Europe and International Headquarters:**  
Beacon House Nuffield Road  
Cambridge CB4 1TF UK  
Tel: +44 (0)1223 727123  
Fax: +44 (0)1223 727101  
email: sales@syngene.com

**Syngene USA Headquarters:**  
5108 Pegasus Court Suite M  
Frederick MD 21704 USA  
Tel: 800-686-4407/301-662-2863  
Fax: 301-631-3977  
email: ussales@syngene.com

**Website: [www.syngene.com](http://www.syngene.com)**

G.0050.A1

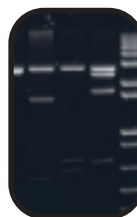
All trademarks acknowledged



## U:Genius features & benefits

### Features

Compact darkroom with sliding door - only 46(w) x 39(d) x 63(h) cms	Small footprint taking up minimal laboratory bench space
Can use a range of transilluminators (Syngene range starts at 20 x 20 cm)	Versatile - not restricted to using only small gels
No compromise on resolution - 2 million pixels	Exceptional resolution for high quality images
Easy to access filter drawer accepts interchangeable filters	Capable of viewing a wide range of different fluorophores
Integral computer	Full networking capability, USB ports and an internal hard disk for image storage
Large colour touch screen	Full intuitive touch control of all functions with large image view
Image enhancements and annotations	Total control over image quality
Save images in TIFF, BMP or JPEG format	Simple to download to any PC or Mac



These are just some of the applications that can be used with U:Genius. The Syngene Applications & Support Department is always ready to discuss your particular application samples and how they can be imaged using the U:Genius. The Syngene website contains further technical notes and FAQ's covering the use of all Syngene gel documentation systems. Further details can be found at [www.syngene.com](http://www.syngene.com)

Over 50,000 scientists world-wide in pharmaceutical and biotech companies, as well as academic and government institutions, have chosen Syngene as their expert imaging partner. If you'd like to find out why, please contact us or one of our dealers for more information and a demonstration of the revolutionary U:Genius

**Syngene Europe and International Headquarters:**

Beacon House Nuffield Road  
Cambridge CB4 1TF UK  
Tel: +44 (0)1223 727123  
Fax: +44 (0)1223 727101  
email: sales@syngene.com

**Syngene USA Headquarters:**

5108 Pegasus Court Suite M  
Frederick MD 21704 USA  
Tel: 800-686-4407/301-662-2863  
Fax: 301-631-3977  
email: ussales@syngene.com

**Website: [www.syngene.com](http://www.syngene.com)**